

WELCOME TO



**GLOBAL CHARITY FUND**



[www.globalcharityfund.com](http://www.globalcharityfund.com)



# ABOUT US

At **Global Charity Fund**, we are dedicated to creating a world where compassion and care know no boundaries. Founded on the principles of love, empathy, and service, our mission is to empower the underprivileged, support the vulnerable, and uplift communities.

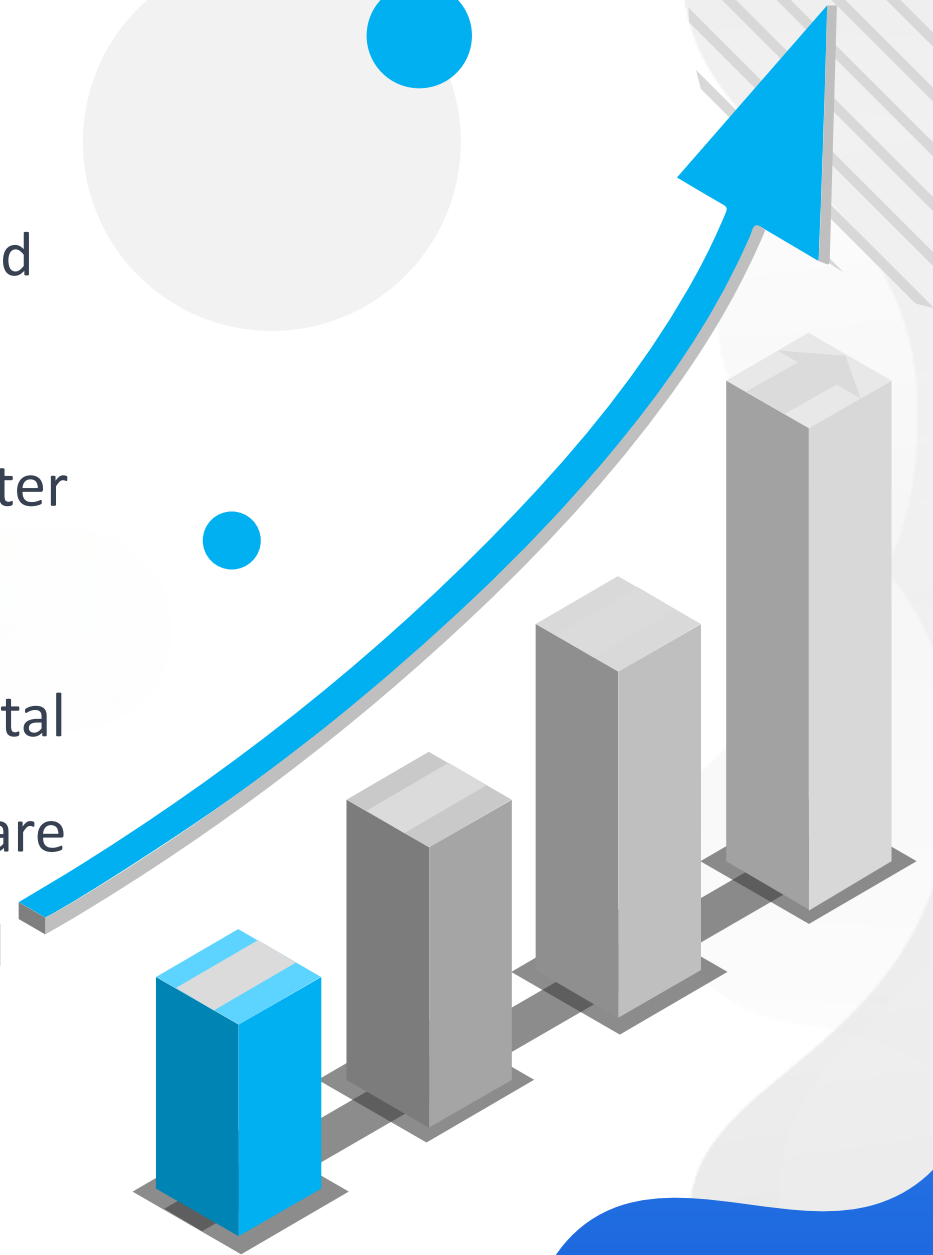
From humble beginnings, we have grown into a trusted organization committed to bringing meaningful change. Our team comprises passionate individuals who work tirelessly to address pressing issues such as education, healthcare, poverty, and environmental sustainability.

We believe that every small step taken with sincerity can lead to significant transformations. Through our projects and initiatives, we aim to bridge gaps, inspire hope, and provide opportunities for a better tomorrow.



# OUR MISSION

Our mission is to empower underprivileged children and youth by providing quality education and accessible healthcare to vulnerable communities. We strive to foster community development through skill training and sustainable initiatives while advocating for environmental sustainability through green projects. Additionally, we are committed to offering timely relief during disasters and emergencies and promoting equality, dignity, and opportunity for all individuals.



An illustration of a businessman in a white shirt and blue tie, carrying a brown briefcase, climbing a bar chart with five bars of increasing height. A large white arrow points upwards from the bottom left to the top right, passing through the bars. The background features a large grey circle, a smaller blue circle, and a grey circle with diagonal lines and a blue circle.

# OUR VISSION

Our vision is to create a world where every individual has the opportunity to live with dignity, hope, and purpose. We aspire to build a future where communities thrive through education, healthcare, and sustainable development. By fostering compassion, equality, and environmental stewardship, we aim to inspire a society driven by kindness and shared progress. Together, we envision a brighter, more inclusive world for generations to come.

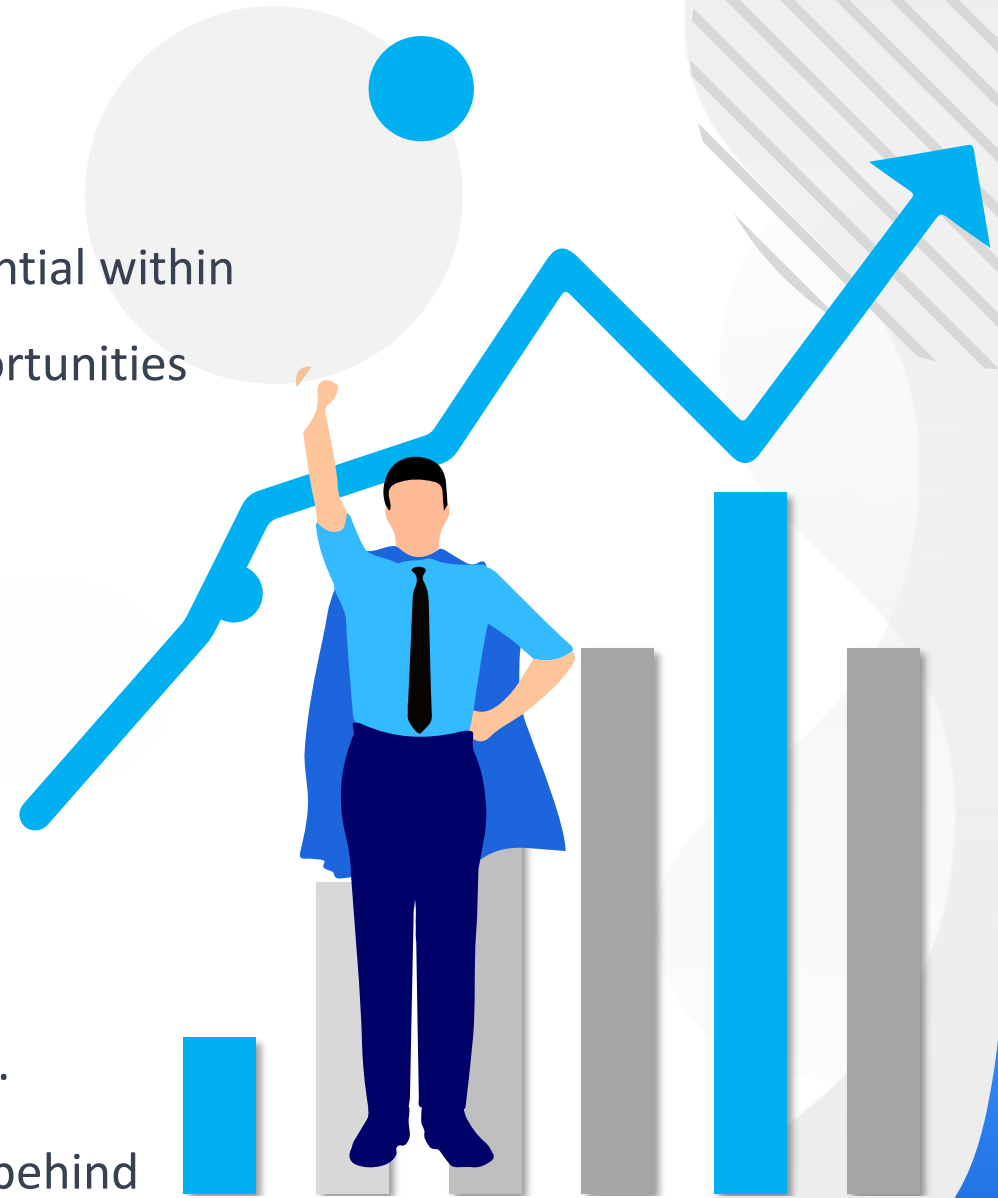
# WHY WE BUILD

We build because we believe in the power of change and the potential within every individual. Our goal is to bridge gaps in society, provide opportunities for those in need, and create a foundation for a better tomorrow.

## We build to:

- Empower the underprivileged with education and resources.
- Support vulnerable communities with healthcare and relief.
- Foster equality and dignity for all.
- Protect the planet for future generations.
- Inspire hope and create lasting impact through collective action.

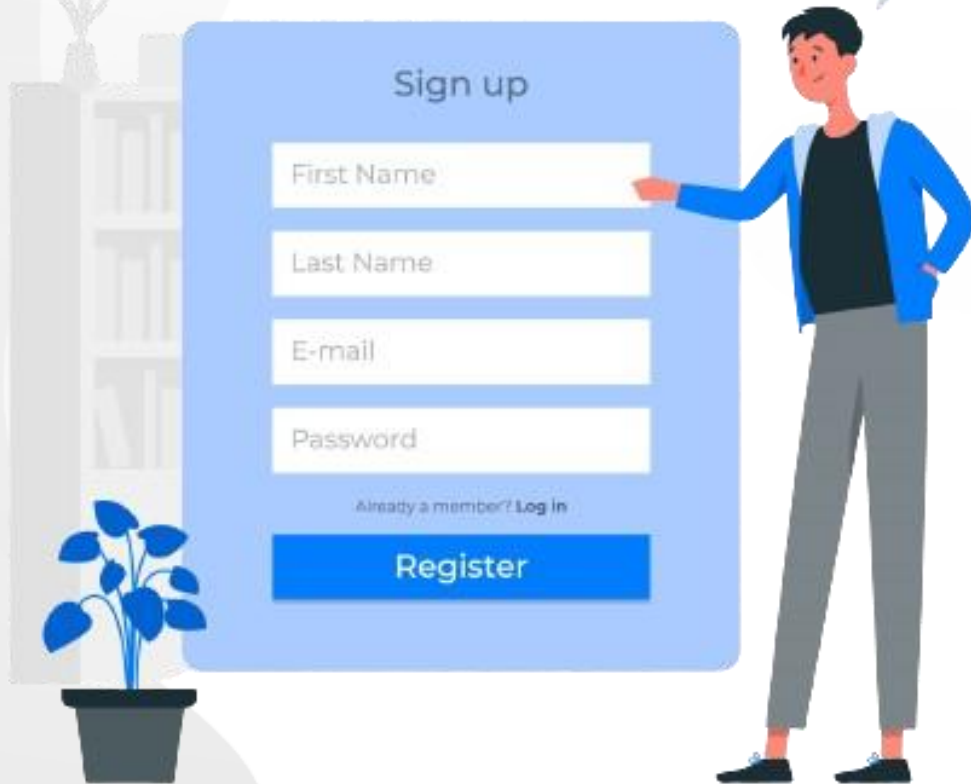
At our core, we build to make a difference, ensuring no one is left behind on the path to progress.



# JOIN US NOW

Join Us for a Journey to Financial Mastery,  
Experience Free Registration at  
**GLOBAL CHARITY FUND**

Are you ready to embark on a transformative journey to financial success? Look no further! **Global Charity Fund** invites you to join our community of empowered traders, and we're making it even easier for you to get started – with **FREE registration.**

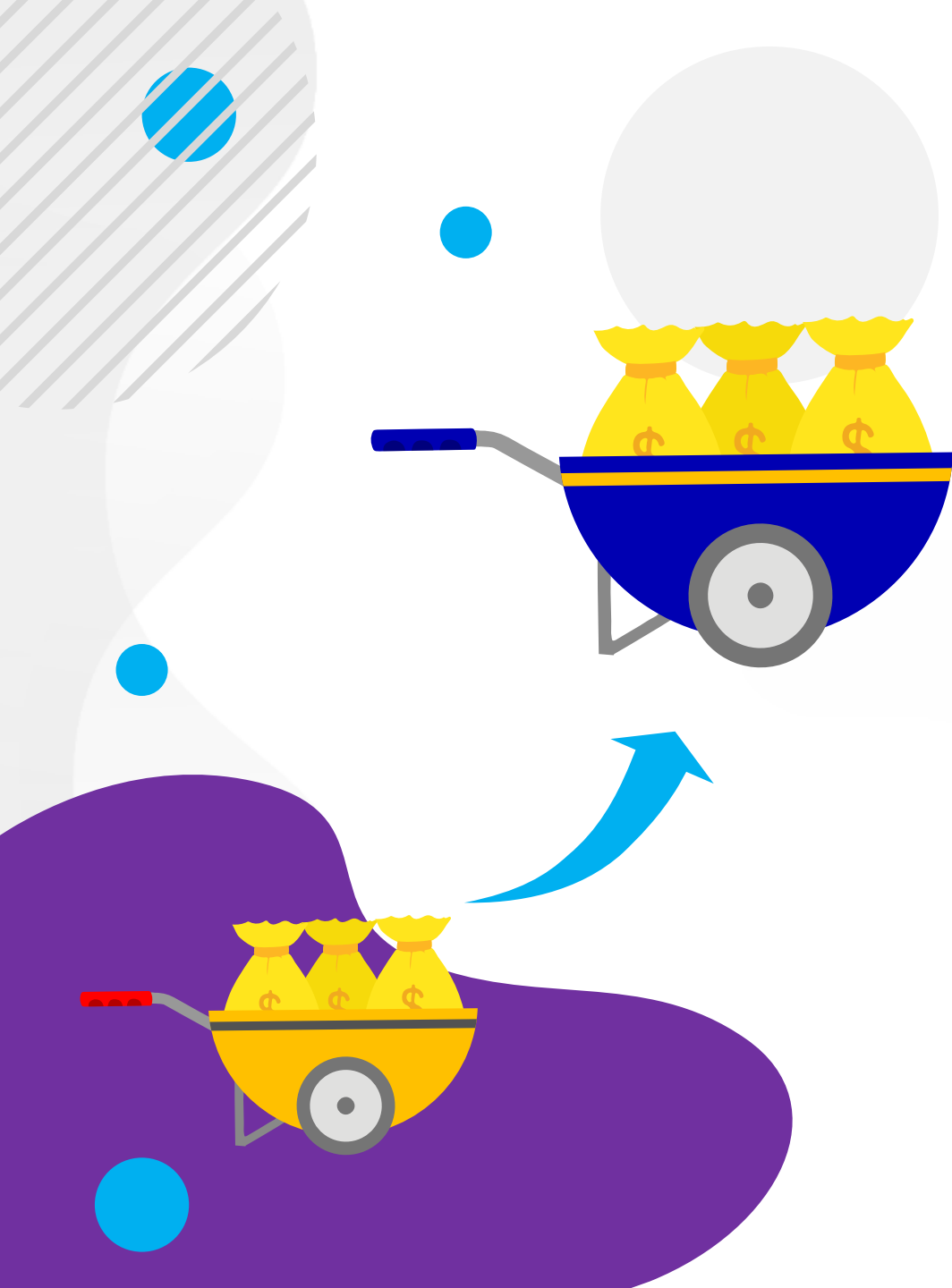


# OUR PACKAGES

Every dollar counts in building a brighter future. Start your journey of giving today just \$6 and be a part of a mission that transforms lives, one step at a time.







# TYPE OF INCOME

- 01 DIRECT INCOME
- 02 LEVEL INCOME
- 03 GLOBAL SINGLE LEG INCOME
- 04 MATCHING INCOME
- 05 RANK & REWARD INCOME
- 06 ROYALTY INCOME
- 07 FRANCHISE INCOME



# DIRECT INCOME

For Every Direct Referral You Will Earn

**8% DIRECT INCOME**

You Can Make Unlimited  
Direct Referrals and Earn  
Unlimited Direct Income



# LEVEL INCOME



LEVEL	RATE
1st	8%
2nd	5%
3rd	3%
4th	1%
5th – 7th	0.5%
8th – 12th	0.4%
13th – 18th	0.25%

# GLOBAL SINGLE LEG INCOME

SLNO	GLOBAL TEAM	INCOME	DIRECT	DONATION	CLOSING DAY
1	20	\$2	1	–	–
2	+60	\$4	+1	–	3 Days
3	+200	\$6	+2	–	3 Days
4	+600	\$15	+2	\$5	8 Days
5	+1200	\$30	+2	\$10	21 Days
6	+2000	\$40	+2	\$15	30 Days
7	+4000	\$60	+2	\$30	30 Days
8	+8000	\$200	+2	\$80	30 Days
9	+16000	\$1000	+2	\$400	30 Days

# GLOBAL SINGLE LEG INCOME

SLNO	GLOBAL TEAM	INCOME	DIRECT	DONATION	CLOSING DAY
10	+28000	\$2000	+2	\$800	30 Days
11	+40000	\$3000	+2	\$1200	30 Days
12	+46000	\$4000	+2	\$1800	30 Days
13	+52000	\$5000	+2	\$2500	30 Days
14	+60000	\$10000	+2	\$4000	30 Days
15	+66000	\$12000	+2	\$5500	30 Days
16	+72000	\$16000	+2	\$4000	30 Days
17	+80000	\$20000	+2	\$5000	30 Days
18	+100000	\$42000	+2	—	30 Days

# GLOBAL SINGLE LEG INCOME

IN JUST 14<sup>th</sup> Month & 5 Days

Total 34 Direct Member



Total Income

**\$115357**

Total Donation

**\$25340**

Net Profit **\$90017 = ₹8101530**

**Only \$6 Donation & 81 lakh Earning**

# MATCHING INCOME

Matching Income Program Is A Two-team Binary System Termed As Left Team and Right Team.

**Matching Ratio 1:2 or 2:1 after that 1:1**

**Get 10% From Left and Right Business**

**Capping 15 Pair Per Day**

**Note :** One Direct Referral needed on both Left and Right

**When You Complete 34 Direct Team the Capping**

**Increased by 20 Pair**



# RANK & REWARD INCOME

RANK	TEAM	1st LEG	2nd LEG	3 <sup>rd</sup> & OTHER LEG	REWARD	FUND
BRONZE	200	80	60	60	\$20 X 6 months	—
SILVER	400	160	120	120	\$40 X 6 months	—
GOLD	500	200	150	150	\$50 X 6 months	—
PLATINUM	800	320	240	240	\$80 X 6 months	—
RUBY	1000	400	300	300	\$100 X 6 months	—
SAPPHIRE	1200	480	360	360	\$120 X 6 months	—
DIAMOND	2000	800	600	600	\$200 X 6 months	—
CROWN DIAMOND	5000	2000	1500	1500	\$400 X 6 months	\$500 Bike Fund
PRESIDENT	10000	4000	3000	3000	\$800 X 6 months	\$1200 Car Fund

**Note :** The team will be counted on "next-to-next" basis, and rewards will be given based on highest rank achieved.



# ROYALTY INCOME

Refer 34 Direct within 15 days and  
you will earn

**5% of COMPANY  
TURNOVER**

Equally distributed by all  
achievers



# FRANCHISE INCOME



DEPOSIT	BONUS
\$120 - \$299	\$6
\$300 - \$599	\$18
\$600 & above	\$48

# TERMS & CONDITIONS

- **Deposit only in USDT (BEP20)**
- **Withdraw in USDT (BEP20) and TRX.**
- **The minimum withdrawal amount is \$10.**
- **You Can make only one withdrawal request per day.**
- **10% deduction on every withdrawal request**
- **After 10% deduction 50% goes to Fund wallet and rest 50% process to your withdrawal account**
- **Payout Closing in Every 24 Hour**
- **P2P transfers are available with a minimum transfer limit of \$5 with 10% deduction.**





**GLOBAL**  
**CHARITY FUND**

**Thank you**



**[www.globalcharityfund.com](http://www.globalcharityfund.com)**

